

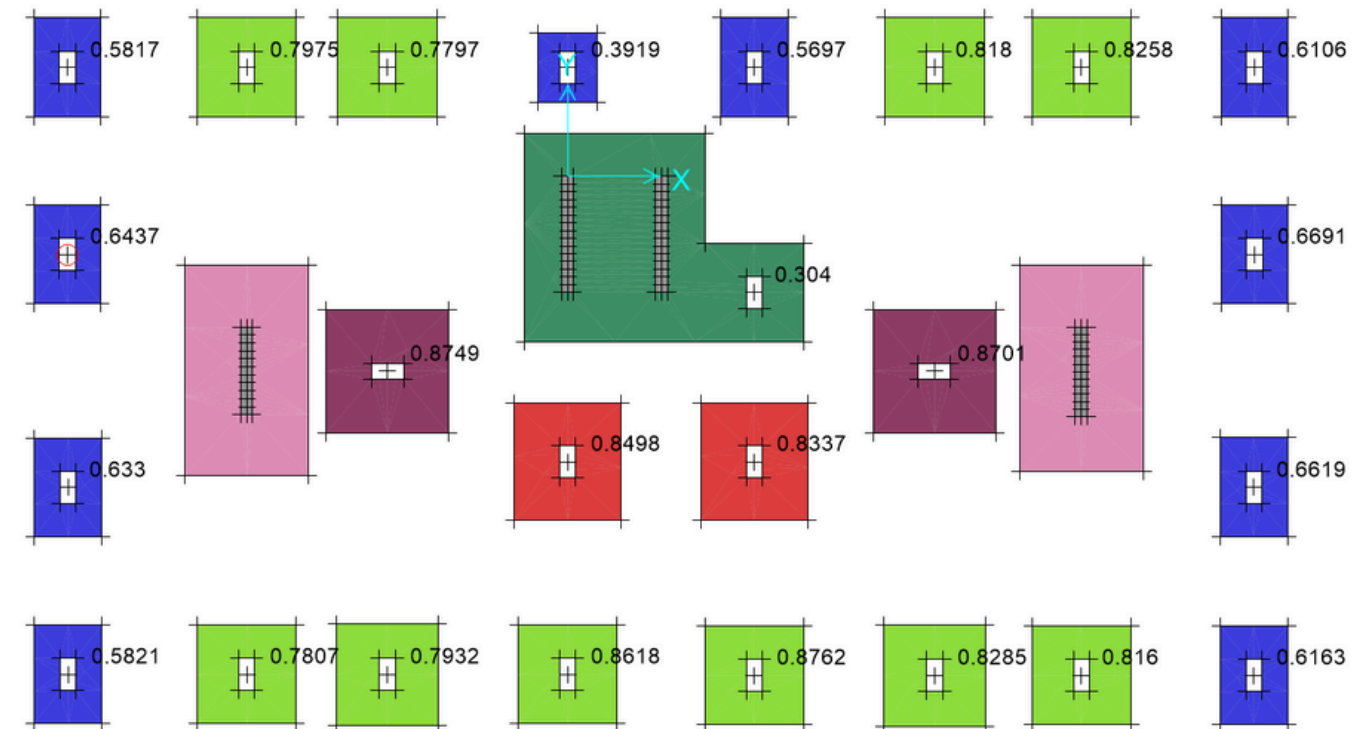
Master Structural Analysis

With SAFE in 30 Days:

**Real Project
Training**



www.e-construct.in



Course Overview:

- This intensive one-month crash course is designed to enhance your skills in structural analysis and design using SAFE, with a focus on practical, real-world applications.
- Ideal for Civil and Structural Engineers, this course includes two comprehensive projects—a foundation design for a residential structure and a slab design for a commercial structure—taking you from the basics to completion.

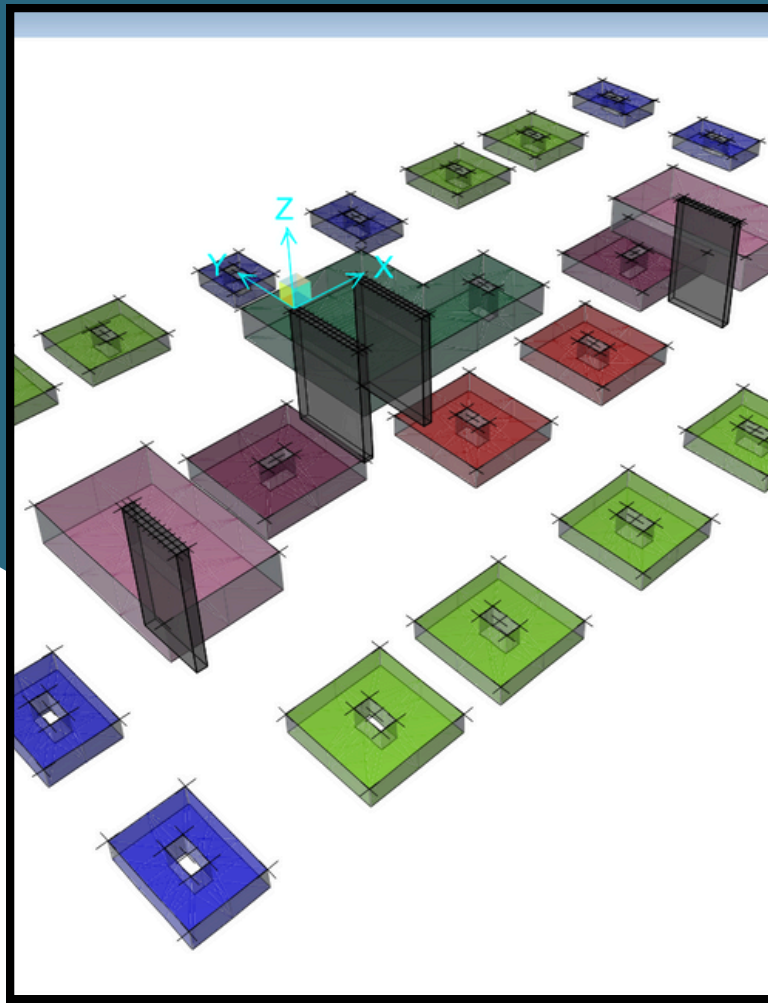


What's Included:

01 Project-Based Learning:

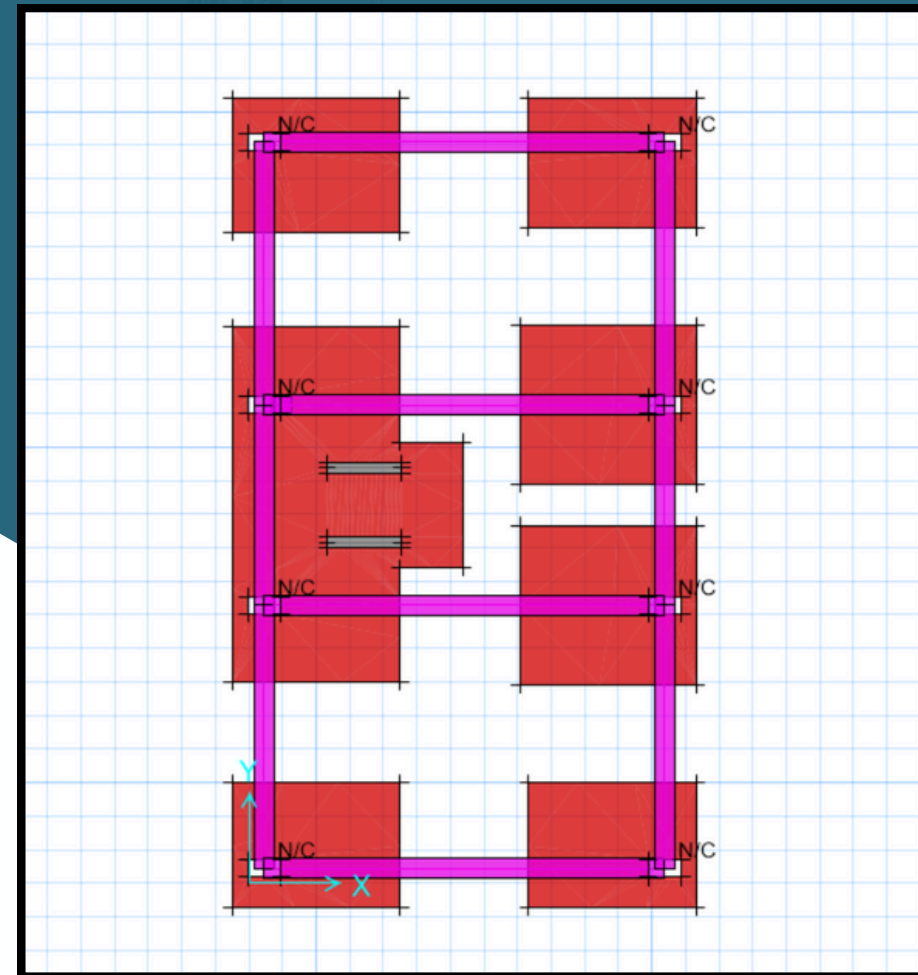
01

Residential Project
on SAFE



02

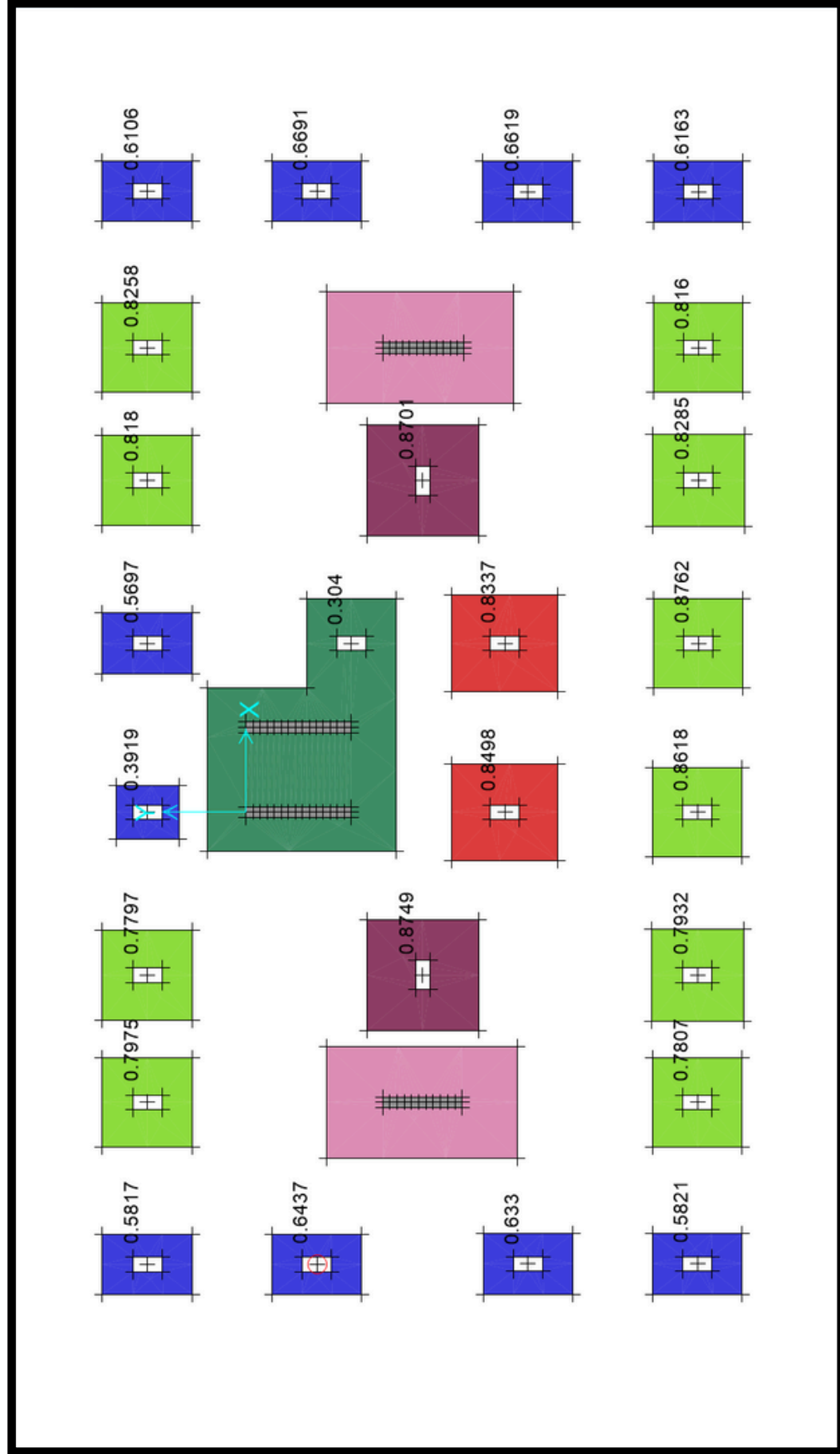
Commercial
Project on ETABS



03

Learn from scratch &
complete both
projects with hands-
on experience.

Project 1: Residential Foundation Design



Project Overview:

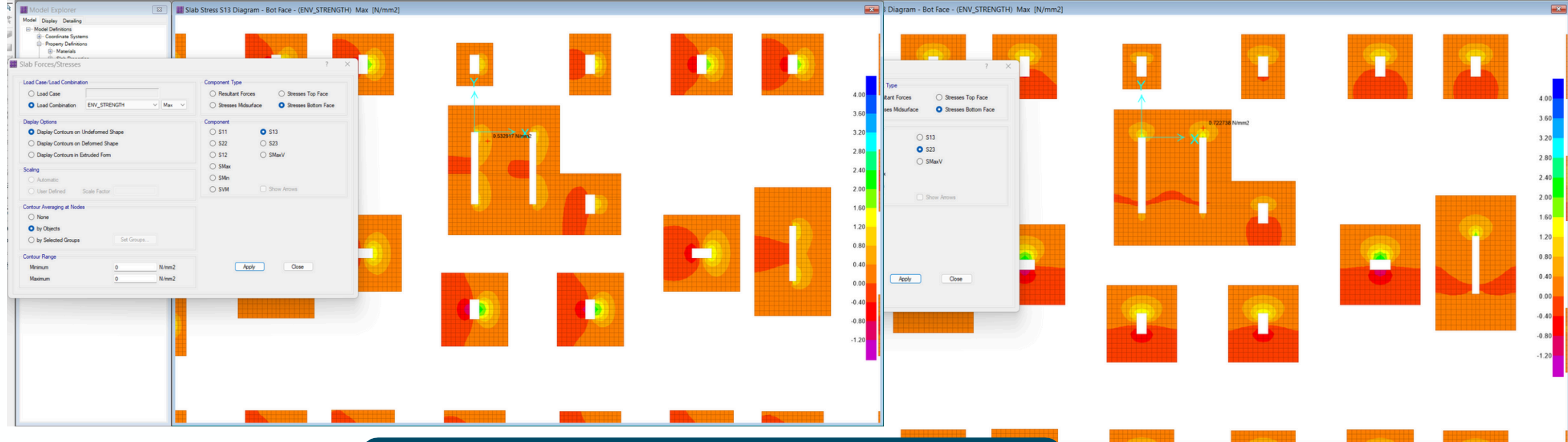
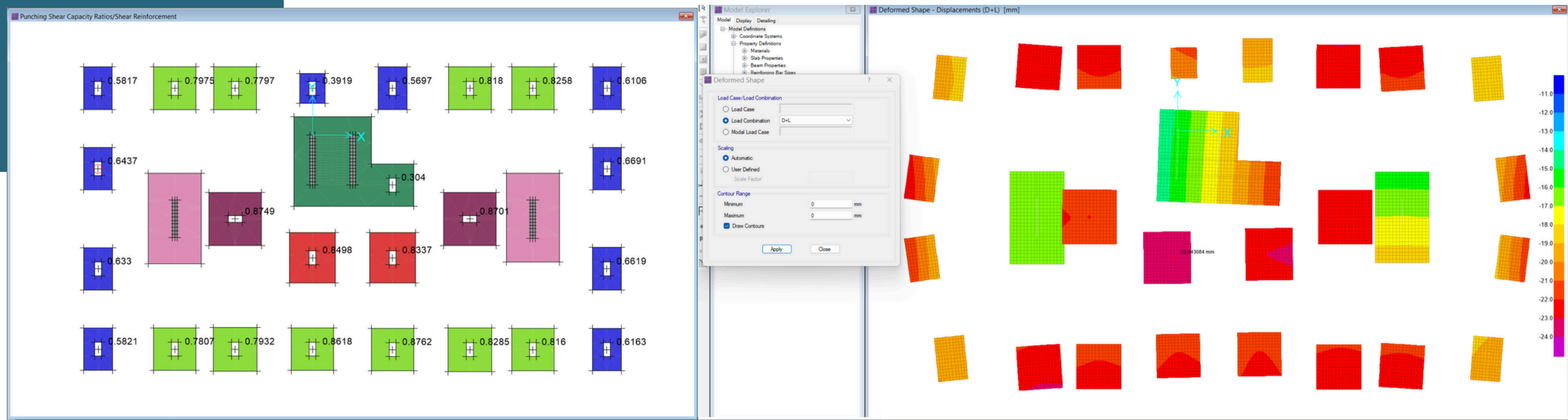
This project focuses on designing and analyzing the foundation of a G+5 residential building using SAFE. The emphasis is on understanding soil-structure interaction, load transfer mechanisms, and creating a safe, cost-effective foundation system.

Key Learning Outcomes:

- Master the process of modeling and designing foundation systems for residential buildings.
- Learn how to apply various load cases such as dead load, live load, and seismic load.
- Understand how to analyze soil-bearing capacity and optimize the foundation design for stability.
- Generate detailed foundation drawings and technical reports for client presentation.

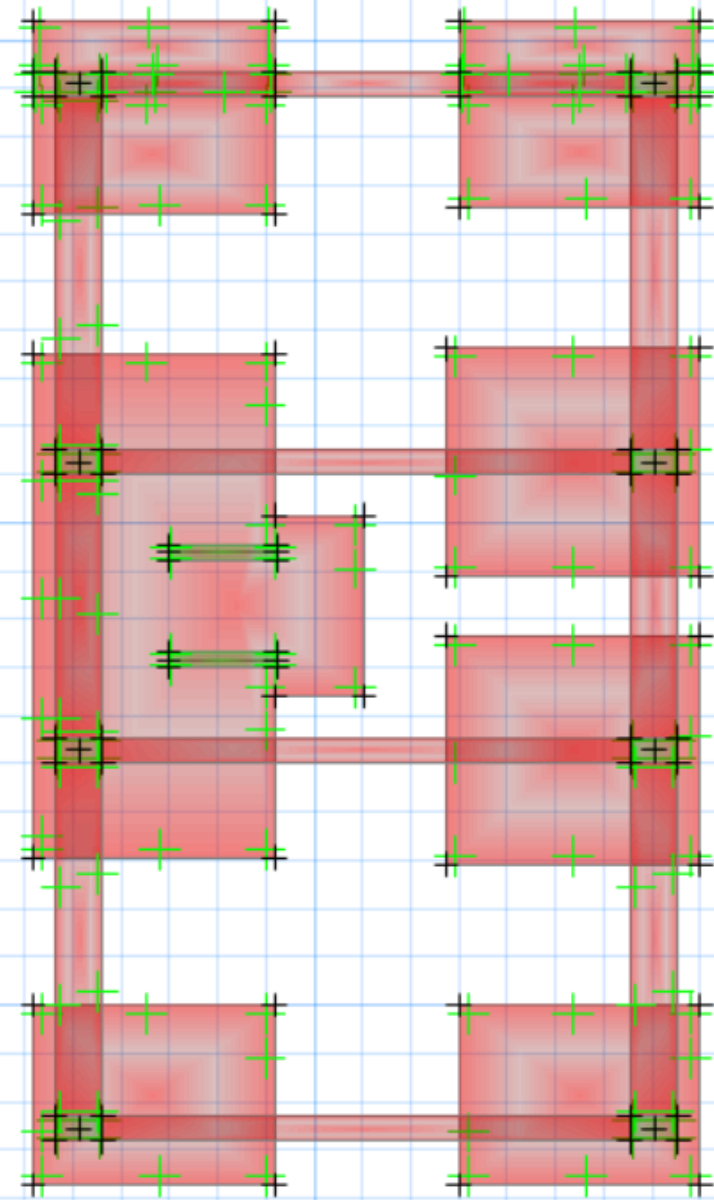
Skills Sets:

- Foundation modeling and analysis.
- Load application and soil-structure interaction.
- Report generation and presentation skills.



1. Residential Building Design

Project 2: Commercial Building foundation Design



Project Overview:

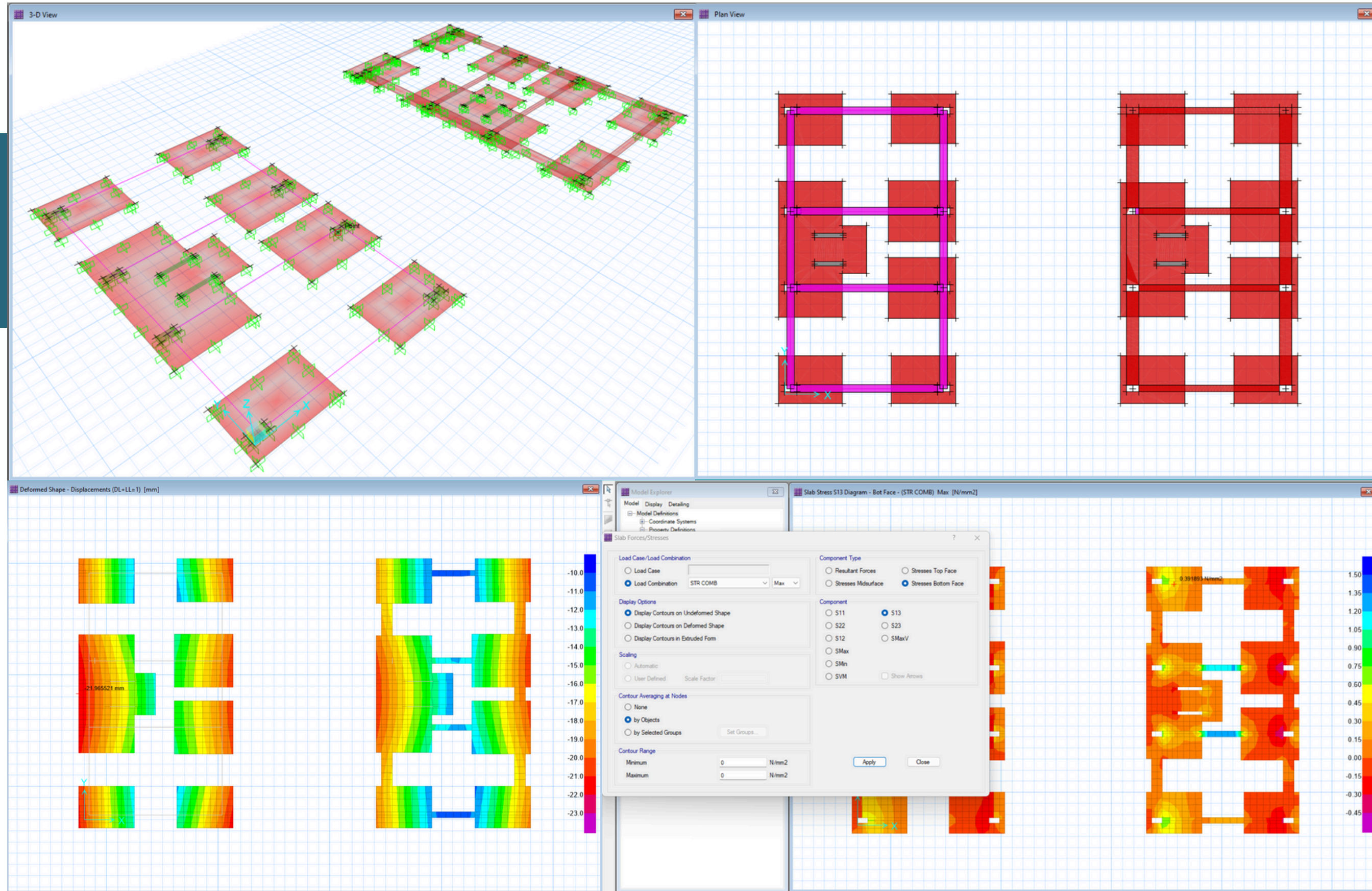
This project focuses on designing and analyzing the foundation system of a multi-story commercial building using SAFE. It offers hands-on experience in managing larger spans, understanding load distribution, and utilizing advanced features of the SAFE software.

Key Learning Outcomes:

- Develop expertise in modeling and analyzing foundation systems for a G+4 commercial building.
- Learn to interpret analysis results and optimize foundation design for structural efficiency.
- Prepare detailed design reports that meet real-world project requirements.

Skills Sets:

- Advanced foundation modeling techniques.
- Seismic load analysis and design optimization.
- Knowledge of Indian standard building code compliance.



2. Commercial Building Design

Comprehensive Learning Materials:



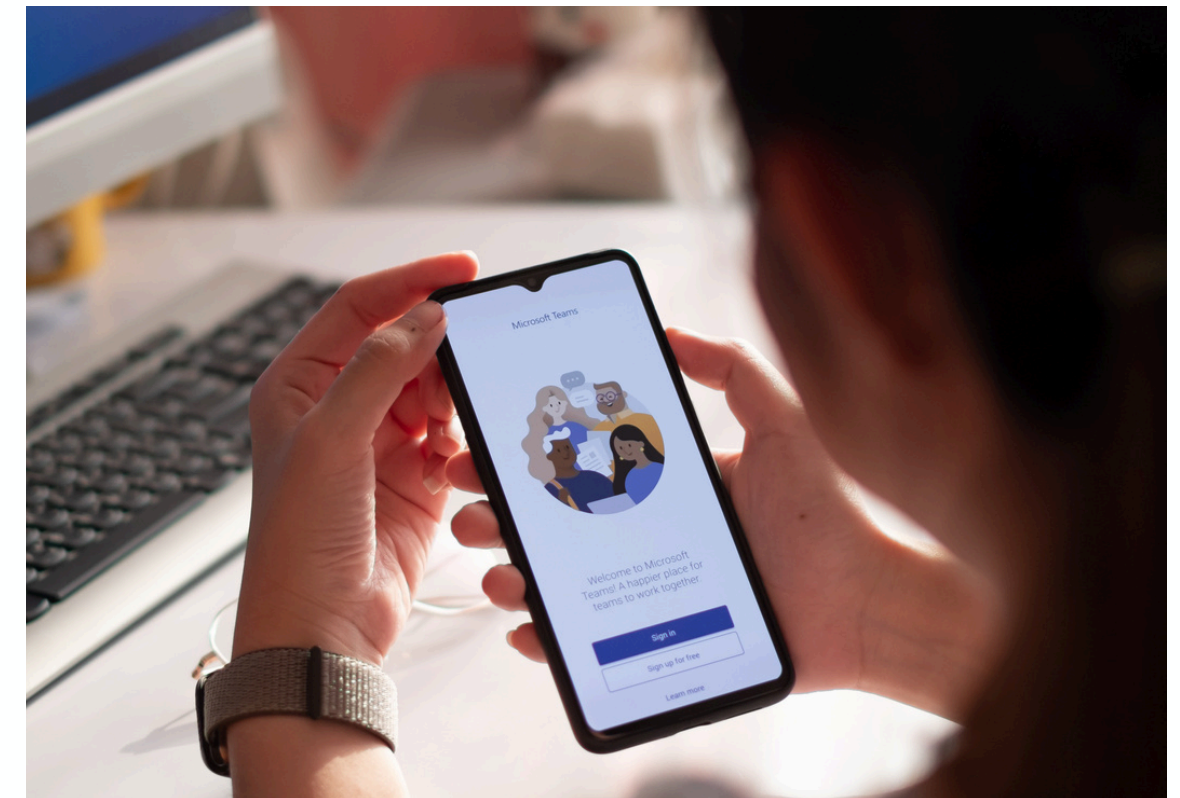
- **Pre-recorded Video Tutorials**

Covering essential ETABS concepts and applications.



- **Live Sessions:**

10 hours of interactive Zoom meetings for personalized guidance and Q&A.



- **Live Chat Support:**

Real-time chat for additional support.

How We Train in Online Mode:



Pre-Recorded Videos:	Watch at your convenience (Self-paced Learning Program).
Live Sessions:	Monday to Wednesday, 7 PM to 9 PM. Access recordings if you miss any session.
Online Doubt Clearing:	Use our chat server on Microsoft Teams for support.
Project Presentation:	Present projects with technical reports as part of the assessment.
Certification:	Receive an experience letter and crash course certification upon completion.
Special Opportunities:	Top performers get an extra live project and a 1-month offline internship.

Any issues? Where to inform for immediate action

**Microsoft Teams
(Chat & Call)**



**Official Zoom
Platform**



**Official WhatsApp
of Mentors**



**Official Emails
of Mentors**

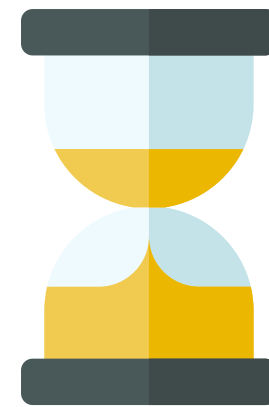


Crash Course Details



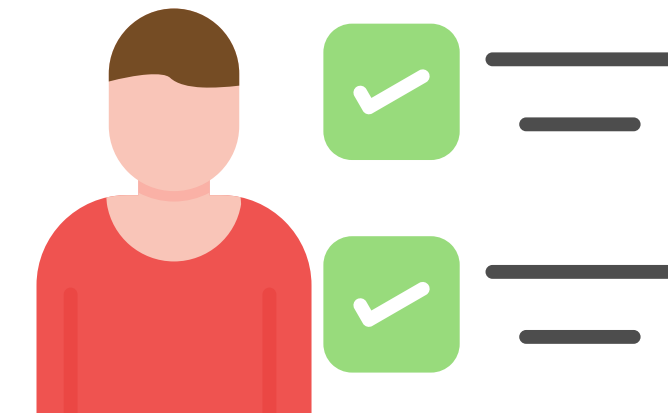
Certification:

A certificate specifying that you have completed two real-world projects with us, ideal for boosting your professional profile.



Course Duration:

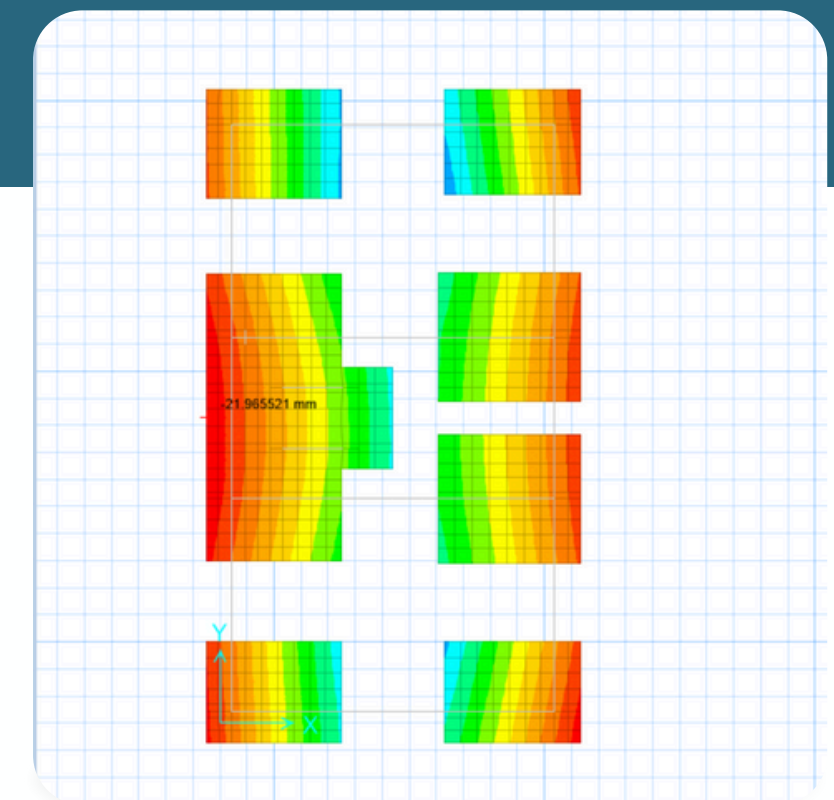
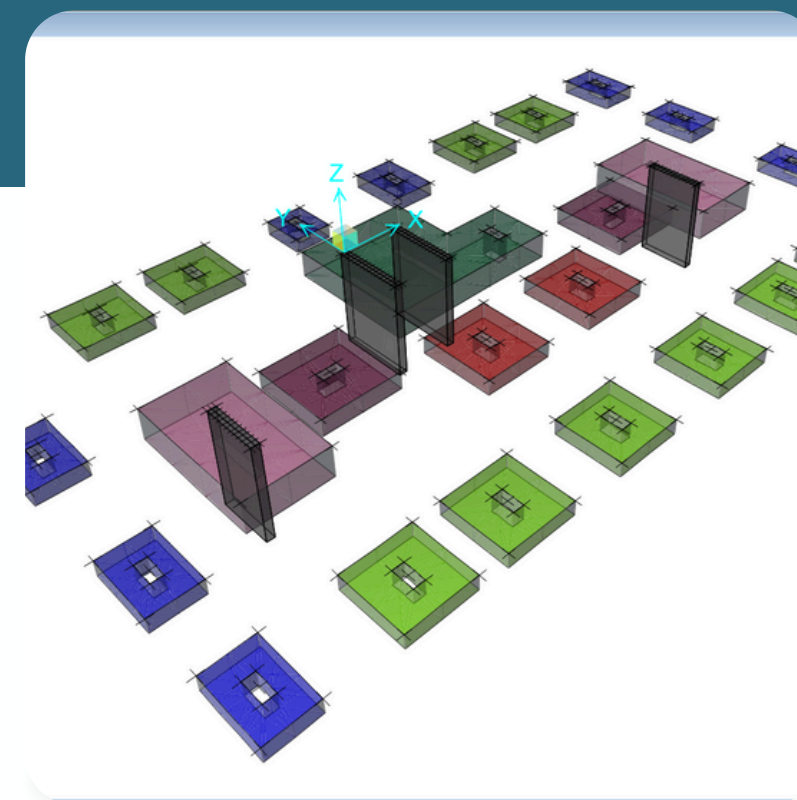
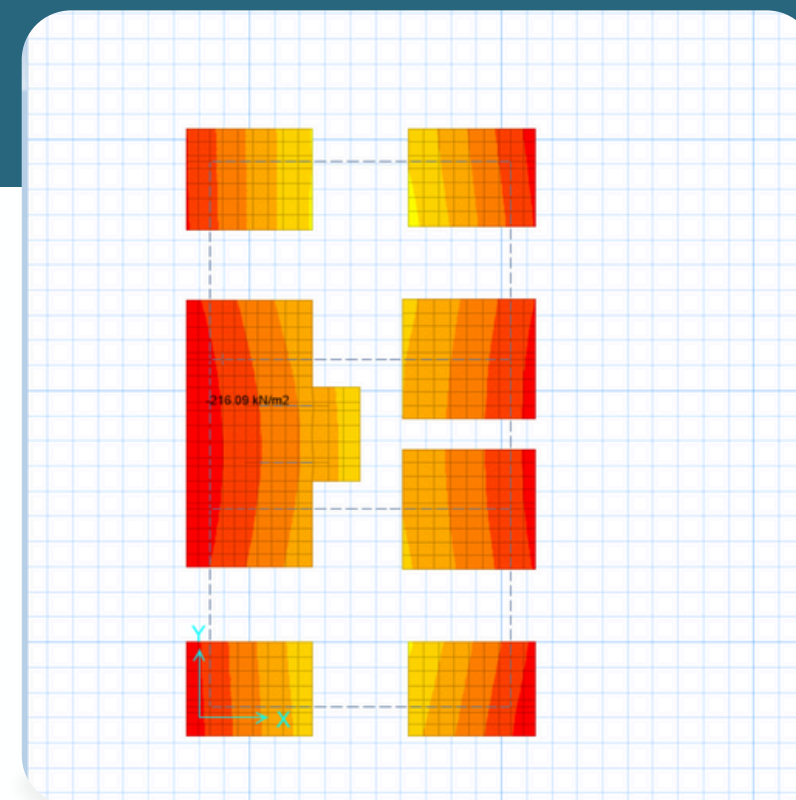
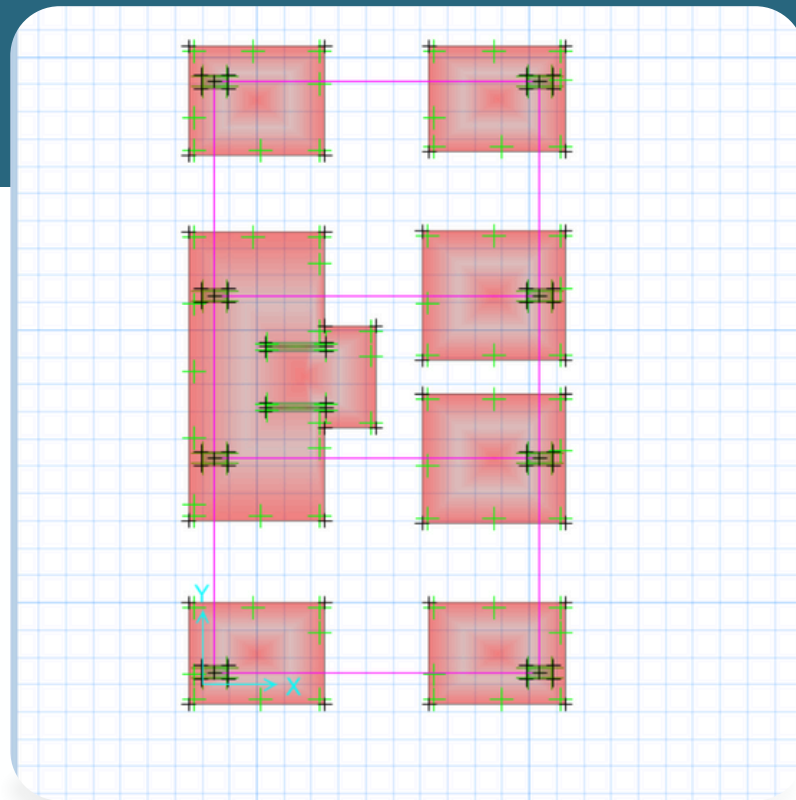
1 Month (Includes pre-recorded videos, live sessions, and interactive Q&A support)



Eligibility

- Diploma in Civil Engineering
- B.E. / B.Tech in Civil Engineering
- M.E. / M.Tech in Structural Engineering

- **Mode of Learning - Online**
- **Fees: ₹12,000 per head for the entire two-project course**



Timeline



Week 1:

Learn SAFE basics, model a residential foundation, and apply loads.

Week 2:

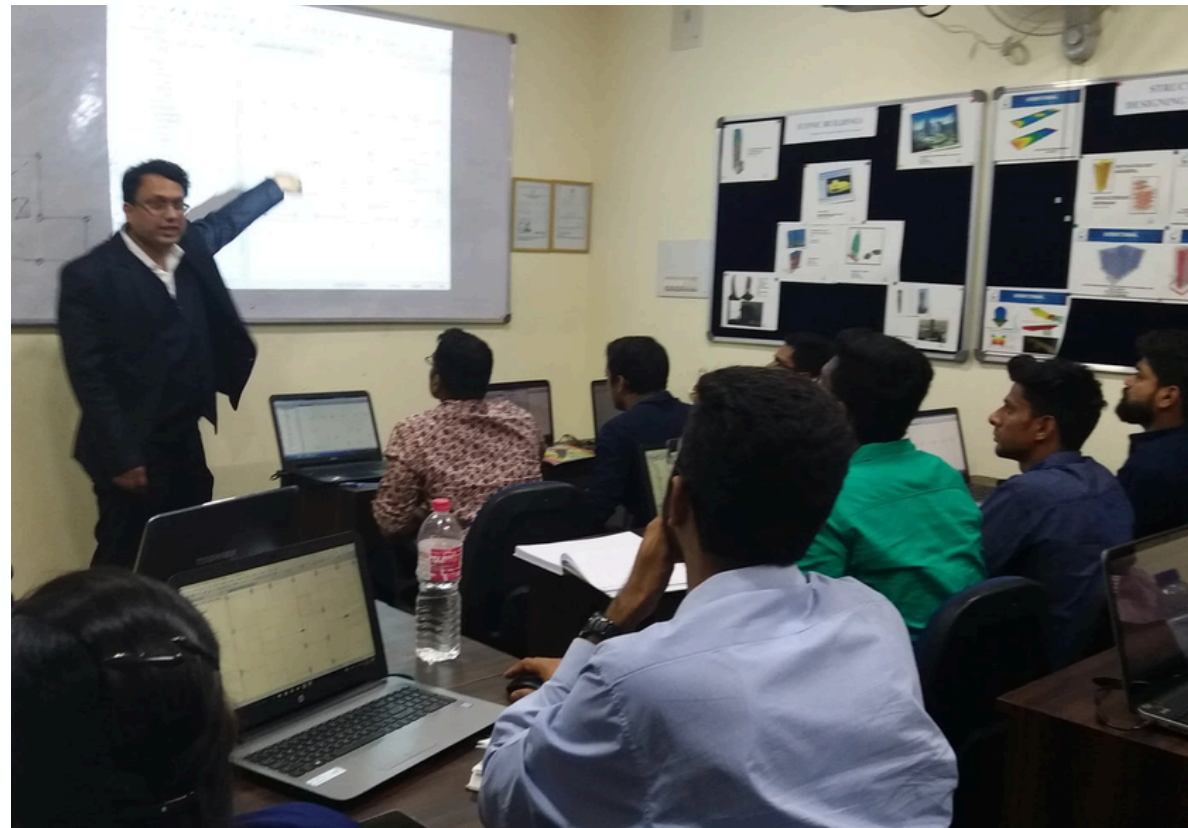
Complete residential foundation design, analysis, and reporting.

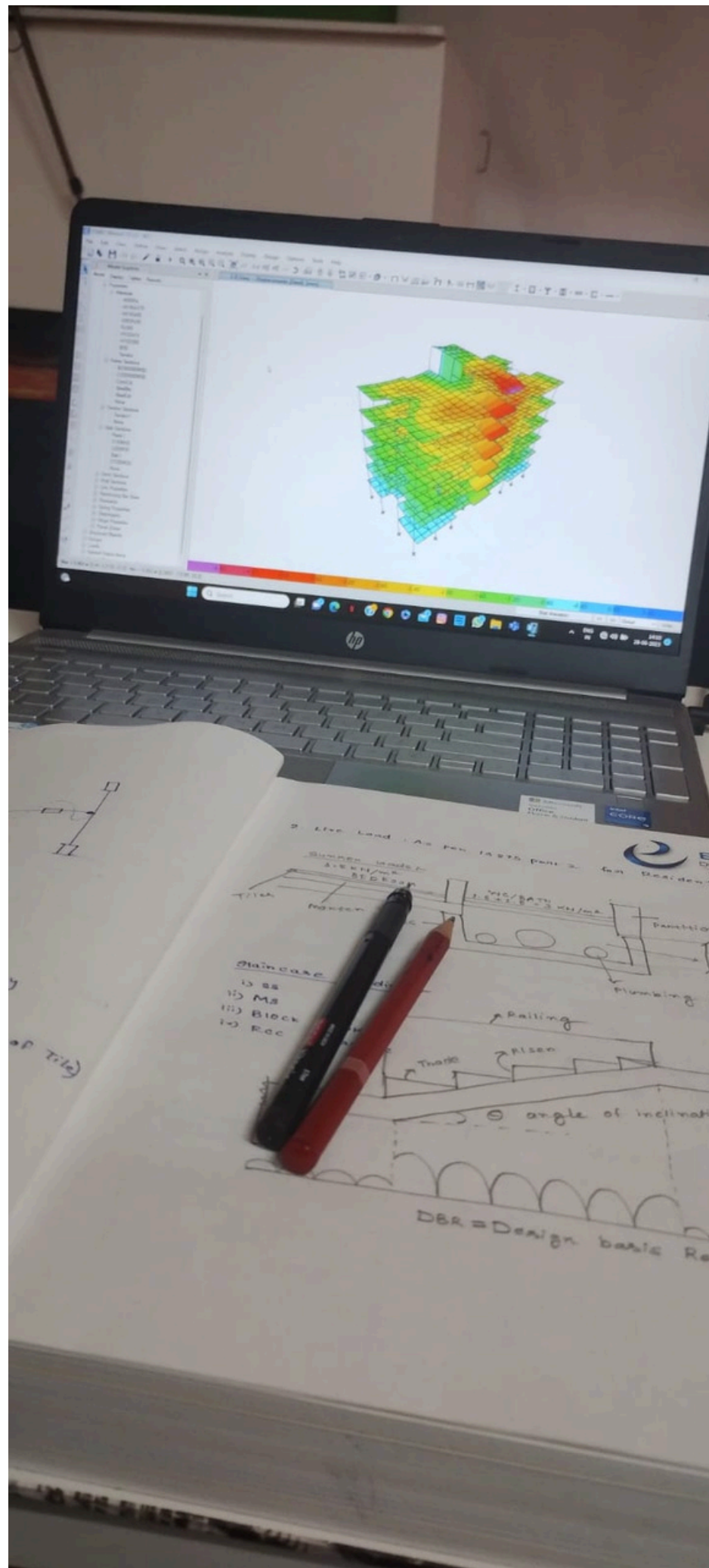
Week 3:

Start the commercial building foundation design project, focusing on advanced modeling and analysis.

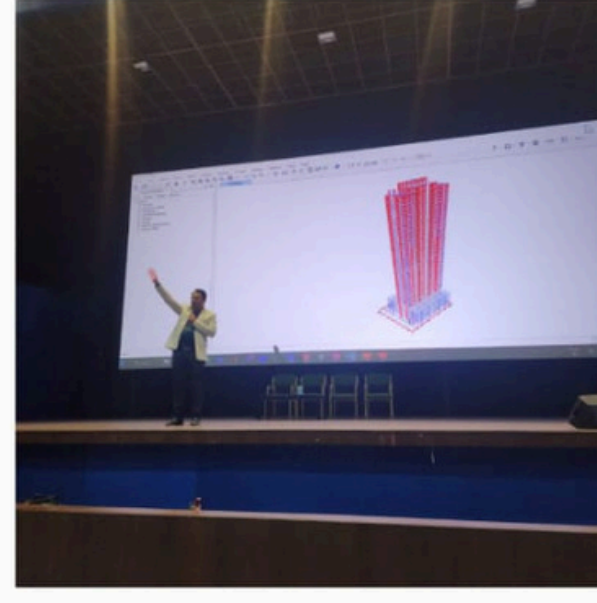
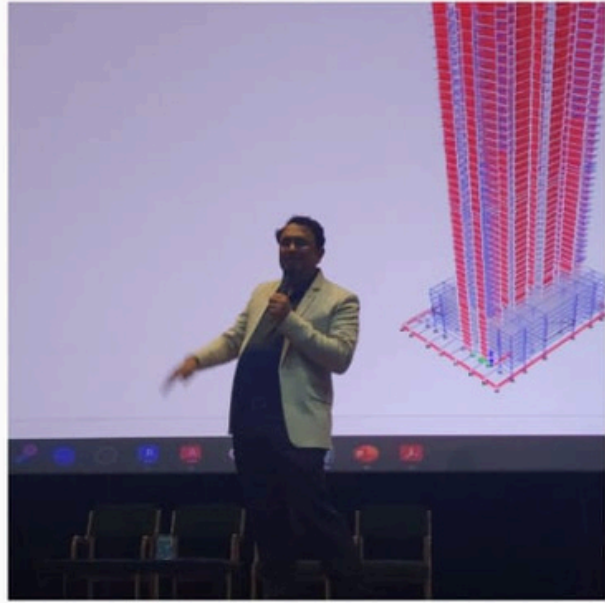
Week 4:

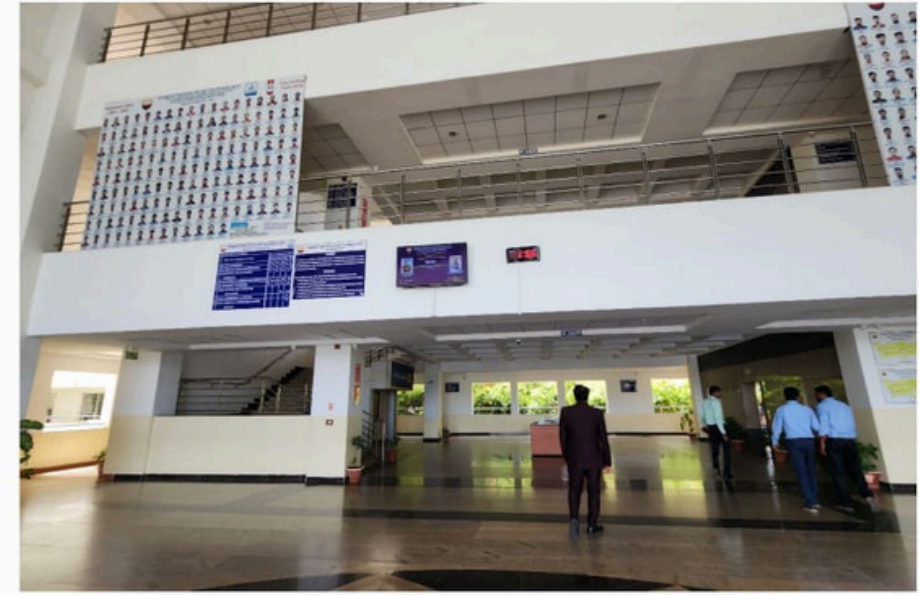
Finalize the commercial foundation design, submit for evaluation, and receive certification.











Thank You

Contact us:



+91 9036744017



info@e-construct.org



www.e-construct.in



Econstruct Design & Build Pvt. Ltd.
Venkatdhari Heights, 1st & 2nd Floor,
Parapanna Agrahara Main Road Opposite
Sai Poorna Premier Apartment, Kudlu,
Bengaluru, Karnataka 560068

For More Details

